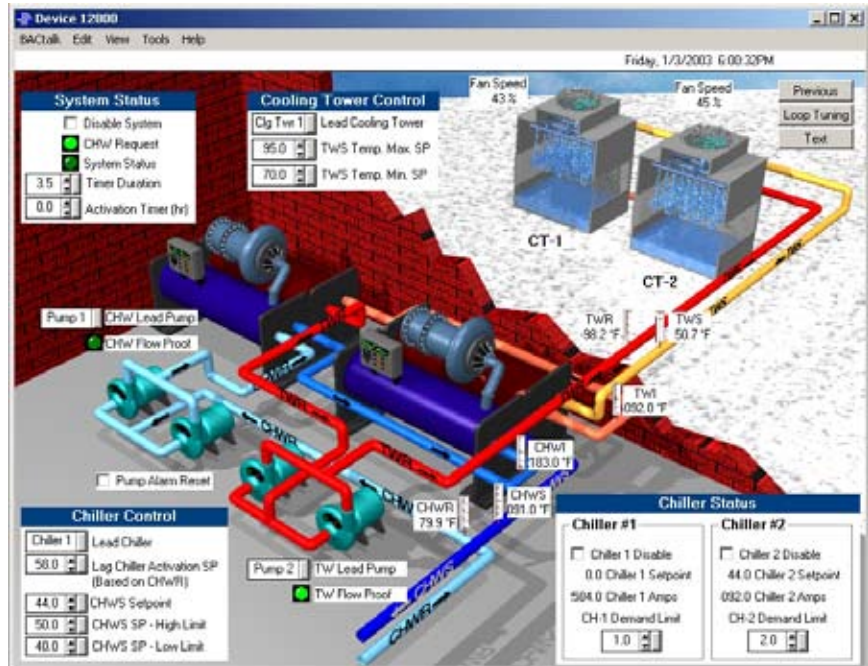


Features

- Powerful energy management**
 Optimum start ensures efficient equipment start times. Demand limiting offers sophisticated load optimization, and energy logging enables you to monitor progress and savings.
- Tenant activity**
 Automatically detect and log after-hours tenant override activity, then simultaneously generate multiple tenant bills.
- Custom graphics**
 Three-dimensional, full color, animated data displays can be customized to suit any requirement and easily updated for equipment additions, moves, and changes.
- Networking and connectivity**
 Built-in Internet and wide area network (WAN) capabilities with BACnet/IP. Remote site and roaming access with modem and direct serial connections.
- SQL Server support**
 Migration to an Enterprise server improves system performance and offers a more robust, stable database, giving you better access to data; third-party custom reporting simplifies connectivity to an Alerton system.
- Improved job design features**
 New features enable users to add displays faster, bill multiple tenants at the same time, and restore all or only some files during deployment.



Alerton® Envision for BACtalk is powerful operator workstation software for BACnet systems. Use it to manage and control building equipment from a personal computer with unprecedented flexibility and power. Envision for BACtalk communicates with BACnet-compliant devices over an Ethernet LAN or through point-to-point (PTP) serial or modem connections.

Three-dimensional animation and full-color graphics enable access to real-time data and energy management features with simple point-and-click control. As-built drawings, floor plans and specific graphics of HVAC equipment are customized for each site. Import images from CAD programs or virtually any graphics program.

In a multi-building campus, a BACnet Ethernet LAN or IP network can interconnect buildings. For large corporations with dispersed holdings, Envision for BACtalk supports BACnet/IP for building integration across the Internet and wide area networks (WANs). Envision for BACtalk can also connect to remote sites via modem or be installed on a portable computer for direct system access.

SQL Server support enables users to migrate jobs from a conventional server database to an Enterprise server database, improving system performance and providing better access to data. The Job Merge function saves time on bigger job sites by making it easier to add and move graphics. Flexible Users and Groups functionality enables device-level privileges and streamlines setup.

These flexible, integrated control options—and many more featured in Envision for BACtalk—save countless hours and resources. Engineers and technicians can control any building from a single, central operator terminal, and have any number of options for roaming system access.



View demand limiting status in real time

Technical data

- **Network and connectivity** BACnet Ethernet, MS/TP, PTP, Annex J BACnet/IP, modem, serial cable.
- **Integration and interoperability** BACnet-compliant. Supports ActiveX interface to other Windows applications.
- **Display capability** Unlimited custom displays and resolution, dependent only on hard disk space and graphics hardware.

Software features

- **Scheduling** Schedule weekly, holiday, and event schedules with a graphical calendar editor.
- **Alarms** Alarms display regardless of currently running application. Dialout alarms to remote sites or modems. Customize alarm handling based on alarm type.
- **Trendlogs** View trendlogs in graph or text format with multiple points per log. Archived in database format for compatibility with office applications.
- **Energy logs** Hourly or daily energy use and demand displayed in graph or text format. Archived in database format for compatibility with office applications.
- **Demand limiting** Flexible demand metering supports various media. Shed and restore binary and analog loads according to load priority. Base strategies on time of day or season. View results in real time.
- **Optimum start** Self-tuning optimum start algorithm adjusts equipment start time based on environmental factors, achieving optimum space conditions for occupancy.
- **Tenant activity** Quickly set up and bill tenants for after-hours activity. Email or print tenant bills. View and adjust events before billing.
- **Zones** Set up zones to schedule and control building operations intuitively.
- **Reporting and printing** Extensive reporting capabilities enable you to generate recurring reports on virtually any aspect of system operation.
- **Auto archiving** Automatically auto-archive trendlogs, energy logs, user activity and alarm history.
- **Job Merge** Restore Utility automatically merges jobs when adding new devices, displays, buildings, etc.

Ordering information

All Envision for BACtalk software packages include CD-ROM, hardware key, operator's manual, and installation and startup guide.

Item number	Description
ENV-BT-2.5-ENT1	Envision for BACtalk v2.5, Enterprise edition with SQL Server
ENV-BT-2.5-LRG Large	Envision for BACtalk v2.5, Large
ENV-BT-2.5-MED Medium	Envision for BACtalk v2.5, Medium
ENV-BT-2.5-SM Small	Envision for BACtalk v2.5, Small
ENV-BT 2.5-XS Extra Small	Envision for BACtalk v2.5, Extra Small

Specifications subject to change without notice

Computer requirements

Recommended

Envision for BACtalk Server and Workstation minimum requirements

- Standard Server or Client (supports up to large jobs using one EBT server)
- 2 GHz (or better) dual-core processor
- 512 MB RAM (or operating system recommended requirements—whichever is higher),
- 36+ GB desktop or server hard drive
- Network interface card (10/100 Mbps)
- USB port

Enterprise Server (supports very large sites using SQL Server)

- 2 GHz (or better), one or more dual-core or quad-core processors
- 2 GB RAM (or operating system recommended requirements—whichever is higher)
- 36+ GB desktop or server hard drive ((larger for larger jobs)
- Network interface card (10/100 Mbps)
- Windows 2000 Professional, Windows XP Professional, Vista or Server 2003
- USB port